



# Preserve Cheatham County

Fighting the Proposed TVA Methane Plant

[www.preservecheathamcounty.org](http://www.preservecheathamcounty.org)

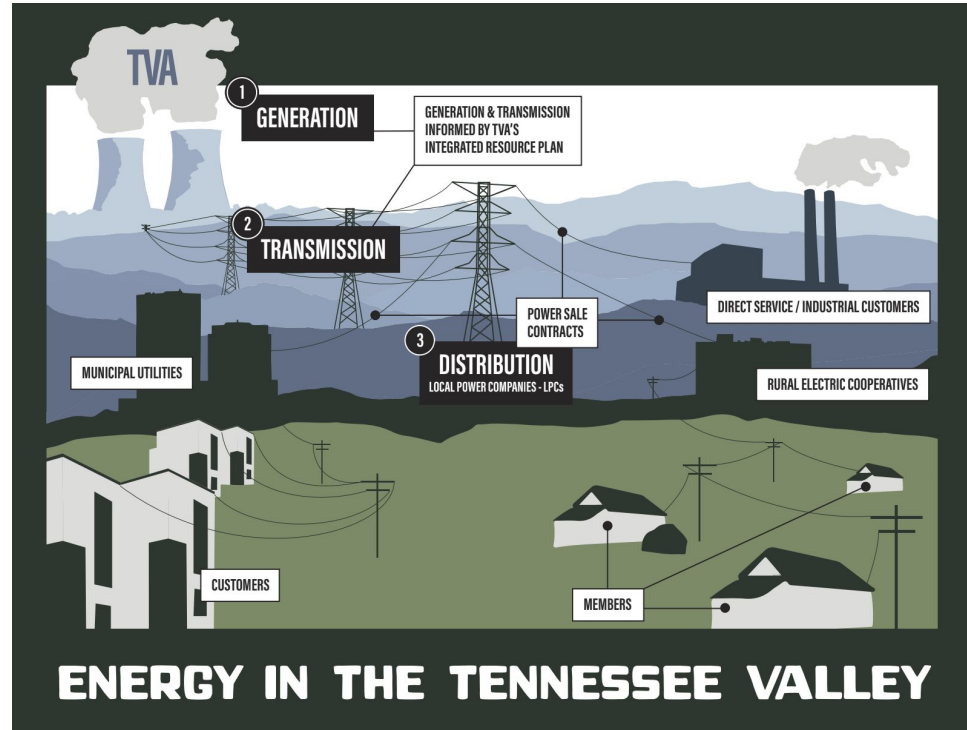
# What is Preserve Cheatham County

- Local organizing group against the gas plant and pipeline
- How do we organize?
  - Educational materials
  - Community meetings
  - Songwriter Series
  - Comment periods
  - TVA Board Meetings
  - Spreading awareness
  - Fundraising
  - [preservecheathamcounty.org](http://preservecheathamcounty.org)
- Two Asks of TVA
  - Provide an alternative site/option
  - Do not industrialize any non-industrial land in Cheatham Co.



# What is the Tennessee Valley Authority?

- Created in 1933 as part of the New Deal
- Federally owned public utility corporation, operates like for-profit company
- Responsible for producing power that they then sell to Local Power Companies (LPCs)
- Service area covers all of Tennessee, portions of Alabama, Mississippi, and Kentucky, and small areas of Georgia, North Carolina, and Virginia



# TVA Shutting Down Coal Plants

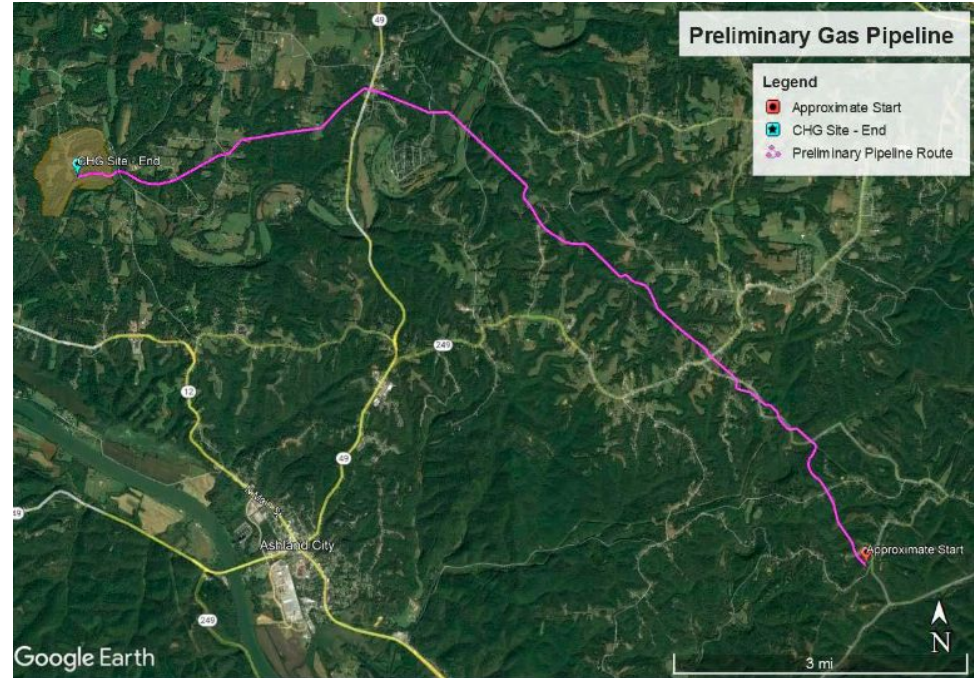
- Shutting down aging and polluting coal fleet
  - Kingston Coal Plant
  - Cumberland Coal Plant
- Plan to replace with natural gas (fossil fuel, primarily methane)
  - Kingston
  - Cumberland
  - Ashland City

TVA Existing Coal Facilities	MW	County (State)	Scheduled Retirement	Replacement Proposed
Bull Run Fossil Plant	881 MW	Anderson (TN)	December 1, 2023	Colbert 750 MW Gas Plant Paradise 750 MW Gas Plant Johnsonville 500 MW Aero Gas Plant
Cumberland Fossil Plant	2,470 MW	Stewart (TN)  Cheatham (TN)	Unit 1 12/31/2026  Unit 2 12/31/2028	Unit 1 1,450 MW Combined Cycle Gas Plant ROD 1/9/2023  Unit 2 900 MW Peaker Gas Plant + 400 MW battery
Kingston Fossil Plant	1,398 MW	Roane (TN)	3 units - December 31, 2026 6 units - December 31, 2027	1,500 MW Combined Cycle/ Aero Gas Plant
Gallatin Fossil Plant	976 MW	Sumner (TN)	December 31, 2031	NA
Shawnee Fossil Plant	1,206 MW	McCracken (KY)	December 31, 2033	NA



# What's Proposed in Cheatham?

- 14 simple Cycle Combustion Turbine Methane Gas Plant
- 400 MW Battery Storage
- 12 Mile Pipeline (extending through folks yards)
- Diesel Fuel Storage
- 900 MW of power to help replace lost generation from Cumberland Coal Plant closure



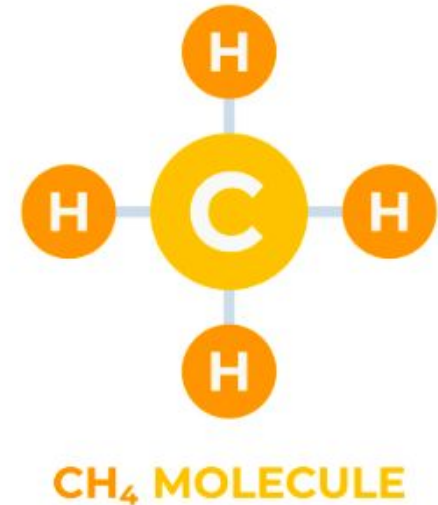
# Proposed Plant Location

- 286 acres of agricultural land on Lockertsville Road
  - Roads located near: Macon Wall, Harristown, Noah Reeves, Hwy 12, and Newland Hollow
  - Property borders Sycamore creek near the PVUD water intake
  - Less than 3 miles to CCCHS and CMS, less than 4 miles to West Cheatham Elementary
  - Explosion could potentially impact folks within 5 miles



# Impacts of Choosing Methane

- **Economic impacts**
  - Decrease property values
  - Net loss of jobs and business revenue
  - \$5B price tag just for next fiscal year
  - Rising rates for customers
- **Environmental Impacts**
  - Potential for groundwater contamination
  - Disruptions to farmland
  - Local fish & wildlife
  - Fracking
- **Social/Cultural Impacts**
  - Safety concerns
  - Pipelines running through historical and cultural landmarks
  - Disruption of way of life/natural beauty
  - Property taken through eminent domain
  - Noise and light pollution







3 CTs @ TVA's Gleason Plant



This site shows 4 CTs to Cheatham's proposed 14.



3 combustion turbines – Cheatham County site will have 14  
!!!



# The Pipeline

- 12 miles long and installed/operated by Kinder Morgan
- Portion will run by existing TVA transmission line + larger land easement
- Remaining land will be acquired through payment or eminent domain
- Methane is highly flammable
- Construction can threaten streams/groundwater
- Location not final (if you live on the proposed route please ask a lawyer to review documents before you sign anything)





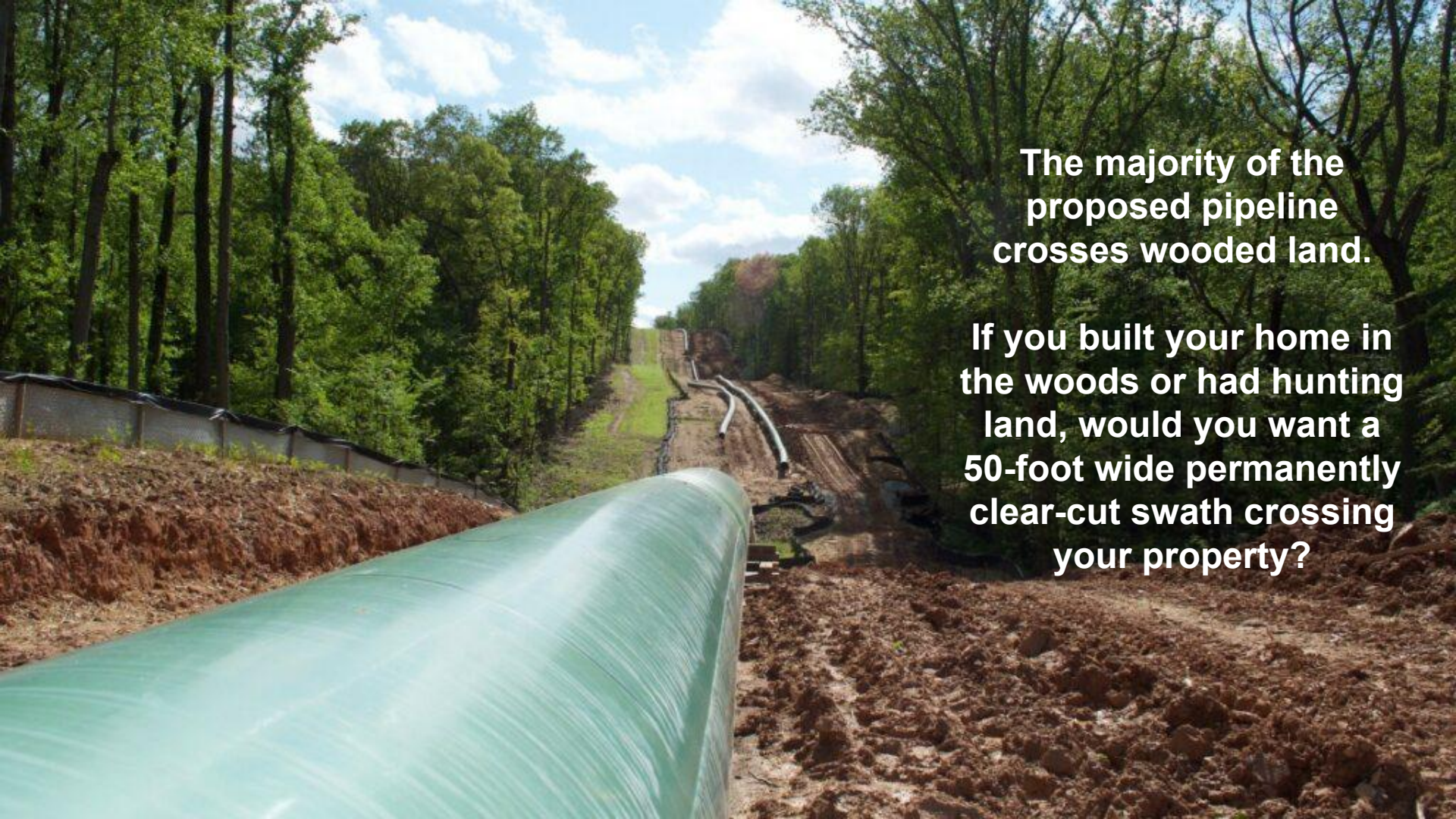
Tennessee Gas Pipeline  
Company, L.L.C.  
a Kinder Morgan company

From 2006 to 2017, according to Pipeline and Hazardous Materials Safety Administration (PHMSA) failure reports, **TGP had 111 "significant incidents"** with their pipelines, resulting in **\$89,815,380 in property damage and 19 federal enforcement actions.**

PHMSA Operator Information, Tennessee Gas Pipeline Company, Operator ID:19160, at [https://primis.phmsa.dot.gov/comm/reports/operator/OperatorIM\\_opid\\_19160.html?nocache=769#\\_Incidents\\_tab\\_2](https://primis.phmsa.dot.gov/comm/reports/operator/OperatorIM_opid_19160.html?nocache=769#_Incidents_tab_2), accessed 2018.01.08.

According to PHMSA, Tennessee Gas Pipeline had at least **257 significant failures** (leaks, fires, and explosions) from 1986 to 2017. This number does not include the less notable accidents that did not meet the criteria for reporting

Data sets of PHMSA Pipeline Safety-Flagged Incidents for 1986-2001, 2002-2009, and 2010-2017 can be downloaded from the tab by that name on the PHMSA Pipeline Incident Flagged Files page, <https://www.phmsa.dot.gov/data-and-statistics/pipeline/pipeline-incident-flagged-files>, accessed 2018.01.10.



**The majority of the proposed pipeline crosses wooded land.**

**If you built your home in the woods or had hunting land, would you want a 50-foot wide permanently clear-cut swath crossing your property?**



# Battery Operated Storage Systems

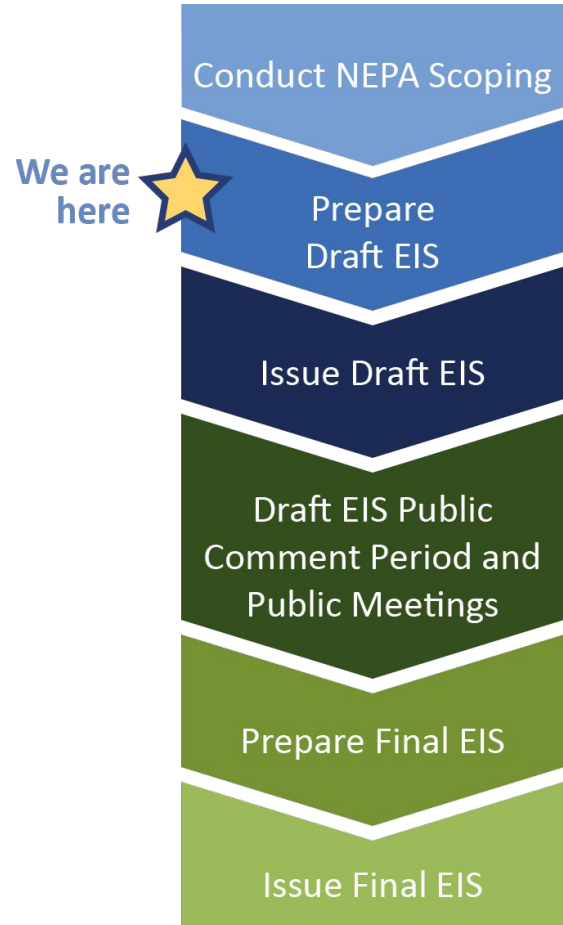
- About 10 acres of lithium battery storage
- Store excess energy for use later on
- Can catch fire if not properly cared for/damaged
- Safer than methane but still contributes to the industrialization of a farming community



# Regulatory Processes for Approval

## Regulating Agencies:

- The Environmental Protection Agency (EPA)
- The Federal Energy and Regulatory Commission (FERC)
- The Army Corp. of Engineers
- The Tennessee Department of Environmental and Conservation
- US Fish and Wildlife



# What Could TVA Do Instead?

- Look into alternative sites that are already industrialized (brownfield sites, etc.)
- Evaluate alternative energy sources that are less disruptive, less expensive, and closer to their end-points.



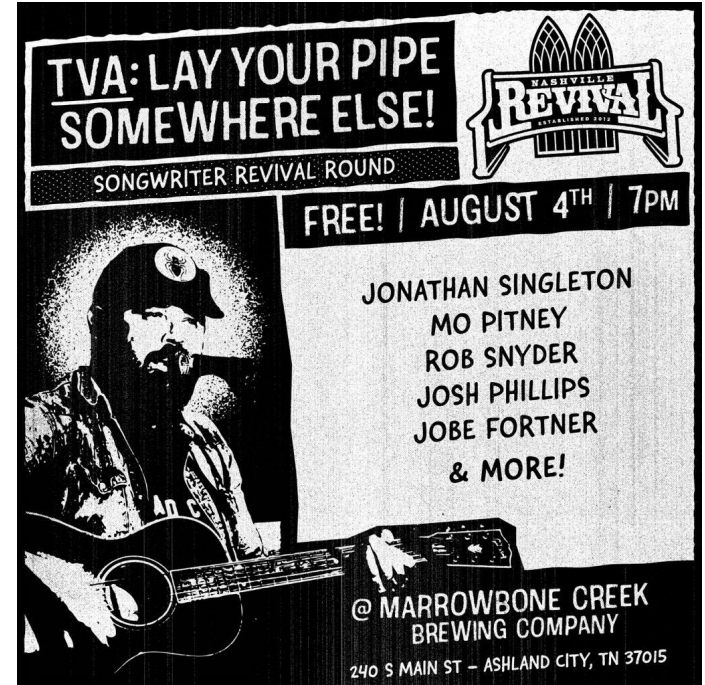
Photo by Abby Ray



# How Will Cheatham Beat'em?

Death by a thousand cuts

- Lawsuits
- Public opposition
- Time/money
- Local organizing
- Political pressure
- Narrative strategy



# How to Get Involved

- Make comments during comment periods
- Spread the word
- Join Preserve Cheatham County (PCC)
- Write a Letter to the Editor (LTE)
- Contact your Representatives
- Explore [preservecheathamcounty.org](https://www.preservecheathamcounty.org)
- Donate to PCC

Email [connect@preservecheathamcounty.org](mailto:connect@preservecheathamcounty.org) or visit [www.preservecheathamcounty.org](https://www.preservecheathamcounty.org) for more information





# QUESTIONS?

[www.preservecheathamcounty.org](http://www.preservecheathamcounty.org)